



**UNHCR**  
The UN Refugee Agency

# GLOBAL TRENDS

FORCED  
DISPLACEMENT  
IN **2025**



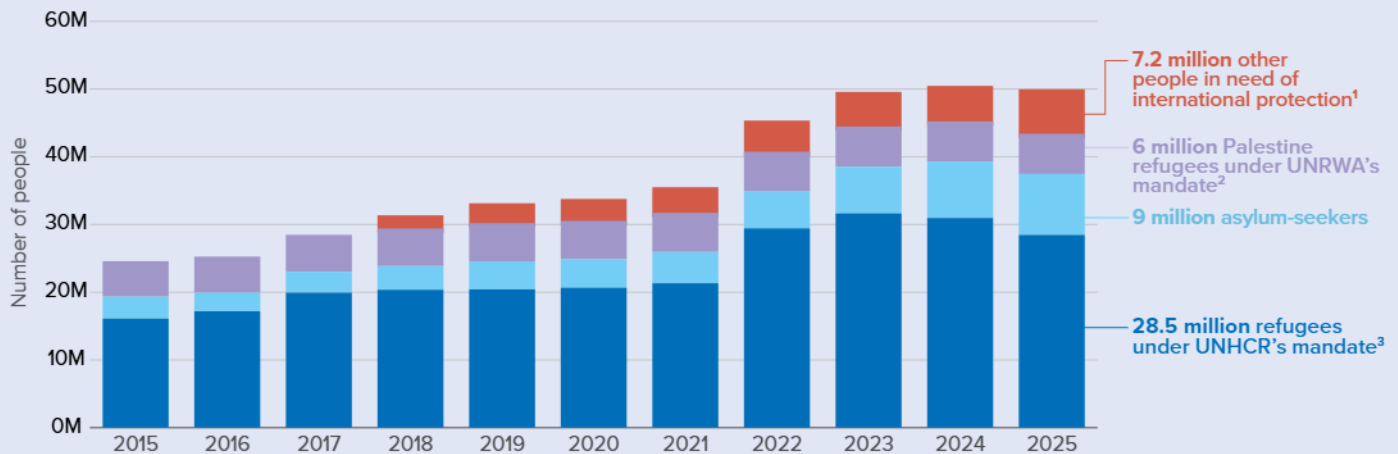
# Trends at a Glance

## 41.6 million are refugees

This includes 35.6 million refugees, people in a refugee-like situation and other people in need of international protection under UNHCR's mandate, as well as 6 million Palestine refugees under UNRWA's mandate at the end of 2025.

## 9 million are asylum-seekers

pending a decision on their asylum claims at the end of 2025.



DISCLAIMER: Figures may not add up to totals per category due to rounding.

## PEOPLE FORCED TO FLEE ACROSS BORDERS AND RETURNING REFUGEES IN 2025

### 5.4 MILLION FORCED TO FLEE ACROSS BORDERS

Almost 5.4 million people were forced to flee and seek safety in other, predominantly neighbouring, countries in 2025.<sup>4</sup>

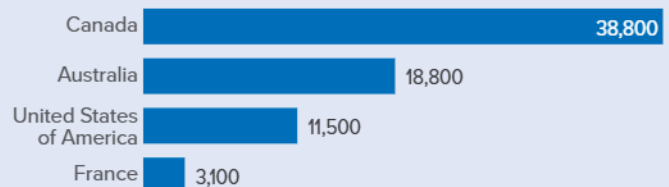
### 4.4 MILLION REFUGEES RETURNED

Nearly 4.4 million refugees returned to their countries of origin in 2025.<sup>5</sup> Many returns have occurred under adverse circumstances and to areas where insecurity persists. Over 90 per cent went back to just three countries: Afghanistan (1.9 million), Syria (1.3 million) and Sudan (651,500).

## RESETTLEMENT DURING 2025

### 81,800 RESETTLED OR THROUGH SPONSORSHIP PATHWAYS

The number of refugees who arrived through resettlement or sponsorship pathways fell by more than half from the 188,800 recorded in 2024.<sup>6</sup> UNHCR submitted 35,000 refugees to states for resettlement in 2025. The main countries of resettlement in 2025 were Australia, Canada, France and the United States of America.

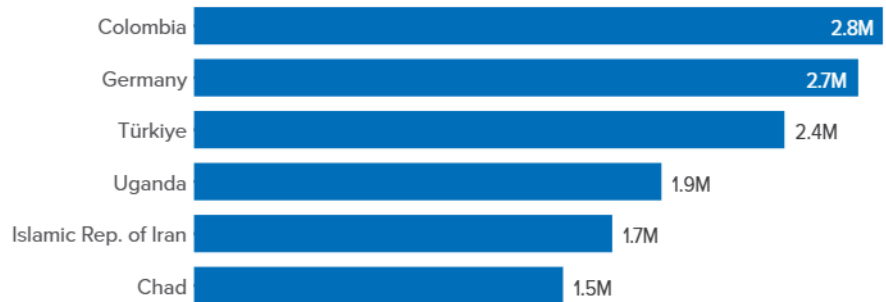


# REFUGEES, PEOPLE IN A REFUGEE-LIKE SITUATION AND OTHER PEOPLE IN NEED OF INTERNATIONAL PROTECTION UNDER UNHCR'S MANDATE AT END-2025

**35.6** MILLION  
WERE REFUGEES

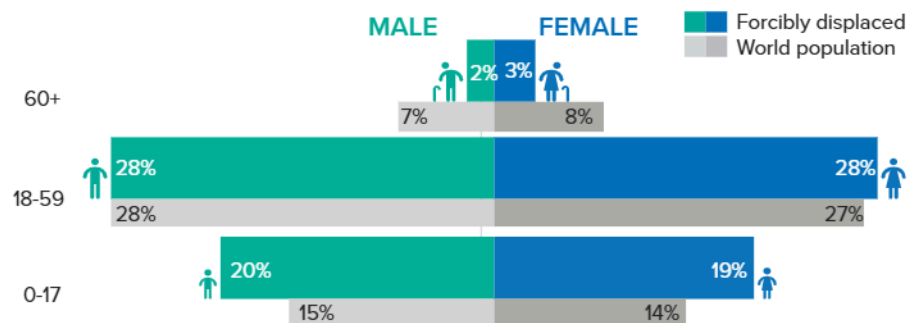
This includes 27 million refugees under UNHCR's mandate, 1.5 million people in a refugee-like situation and 7.2 million other people in need of international protection.

**36%** HOSTED IN 6 COUNTRIES



**39%** ARE  
CHILDREN

Children account for 29 per cent of the world's population, but 39 per cent of refugees, people in a refugee-like situation and other people in need of international protection.<sup>7</sup>



DISCLAIMER: figures do not add up to 100 per cent due to rounding.

**26%** HOSTED IN  
THE LEAST DEVELOPED  
COUNTRIES

The Least Developed Countries provided asylum to 9.4 million of the world's refugees and other people in need of international protection. Low- and middle-income countries hosted 68 per cent of the total.<sup>8</sup>

**70%** WERE  
IN PROTRACTED  
SITUATIONS

Protracted situations are defined as those where refugees have been in exile for five years or more after their initial displacement, without immediate prospects for implementation of durable solutions.

**65%** HOSTED  
IN NEIGHBOURING  
COUNTRIES

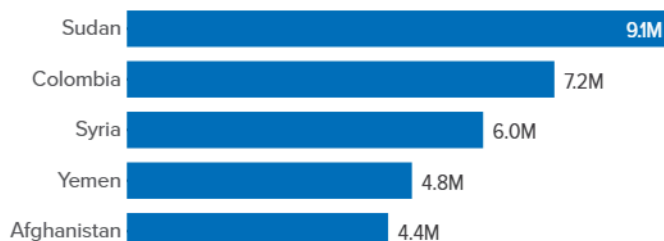
65 per cent of refugees and other people in need of international protection lived in countries neighbouring their countries of origin.

## INTERNALLY DISPLACED PEOPLE<sup>9</sup>

**68.7** MILLION INTERNALLY  
DISPLACED PEOPLE

According to the Internal Displacement Monitoring Center (IDMC), the number of internally displaced people due to conflict or violence is estimated at 68.7 million as of end-2025. IDPs have not crossed an international border — they remain within their own countries, often in extremely precarious conditions and without the formal protections accorded to refugees.

**46%** OF IDPs ARE  
FROM 5 COUNTRIES

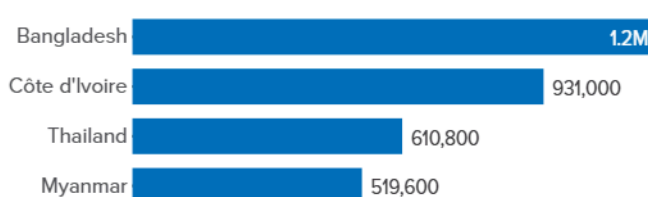


## STATELESS PEOPLE

**4.5** MILLION PEOPLE  
ARE STATELESS

4.5 million people are estimated to be stateless at end-2025. The true number is likely to be much higher — many stateless populations are unregistered and invisible to official statistics.

**7 in 10** STATELESS PEOPLE  
LIVE IN JUST FOUR COUNTRIES



**46,100** STATELESS  
PEOPLE RECEIVED CITIZENSHIP

46,100 stateless people acquired a nationality during 2025 through naturalization, legal reform, or dedicated statelessness determination procedures — a step toward the goal of ending statelessness.

**Rohingya** ARE THE  
WORLD'S LARGEST STATELESS GROUP

1.8 million Rohingya constituted 41 per cent of the reported global stateless population at end-2025. Of the 1.8 million, approximately 1.2 million are hosted as refugees in Bangladesh, having fled persecution in Myanmar.

- 1 See [Methodology, Refugee Data Finder](#), UNHCR, for a definition of each population group.
- 2 See [Palestinian population in Lebanon: findings from UNRWA's digital identity verification](#), October 2025, United Nations Relief and Works Agency for Palestine Refugees in the Near East (UNRWA). UNRWA's methodology for estimating the number of Palestine Refugees in Lebanon has been revised and now distinguishes between the registered and resident Palestinian population. 228,300 Palestine Refugees were found to be residing in Lebanon at end-2025. The decrease from the reported number of 486,300 Palestine Refugees registered in the country the year before is a result of the change in methodology. In the same time period, the overall number of Palestine Refugees globally has increased by 1 per cent.
- 3 All references in this infographic to refugees under UNHCR's mandate includes people in a refugee-like situation.
- 4 This figure includes those that applied for asylum on an individual basis (2.8 million), were registered as asylum-seekers (108,000), were recognized through group procedures (945,600) or were granted temporary protection (930,100). It also includes new arrivals of people in a refugee-like situation and other people in need of international protection. See the [Forced displacement flow dataset](#), UNHCR.
- 5 The reported refugee returns may include the return of registered

refugees as well as other people that had been forced to leave their country of origin. In large scale return movements, it is often extremely challenging to differentiate returnees based on their legal status in their country of displacement.

- 6 Arrivals through resettlement or sponsorship pathways are according to official government data on resettlement arrivals and UNHCR statistics on resettlement departures. See also the [UNHCR master glossary of terms](#), UNHCR (accessed 01 May 2026). Sponsorship pathways are mainly reported by Australia and Canada. See also [Safe pathways for refugees, 2026 update](#) OECD-UNHCR safe pathways for refugees V, June 2026, UNHCR for more details about complementary pathways, including sponsorship pathways.
- 7 Sources: Refugees, people in a refugee-like situation and other people in need of international protection are based on the available data (UNHCR) and World Population estimates (UN Department of Economic and Social Affairs).
- 8 See [Key facts for countries hosting the world's refugees](#), UNHCR. High income countries hosted 29 per cent of refugees. Note that the figures do not add up to 100 per cent, as several countries, notably Ethiopia and Venezuela, did not receive an [income group classification for 2025](#).
- 9 Source: [Internal Displacement Monitoring Centre \(IDMC\)](#).

## Statistics for forcibly displaced and all other people protected and/or assisted by UNHCR

This report analyses changes and trends in forced displacement from January to December 2025 among people covered by the mandate of UNHCR, the UN Refugee Agency.<sup>10</sup> The data presented are based on information received as of 1 May 2026 unless otherwise indicated.

At the end of 2025, the number of forcibly displaced people worldwide was estimated at **117.8 million**.<sup>11</sup> This figure encompasses refugees under UNHCR's mandate, Palestine refugees under the United Nations Relief and Works Agency for Palestine Refugees in the Near East's (UNRWA) mandate, asylum-seekers, internally displaced people (IDPs) and other people in need of international protection.

UNHCR also estimates the population that it protects and/or assists. This includes those who have been forcibly displaced (refugees, asylum-seekers, IDPs and other people in need of international protection); those who have returned home within the previous year; those who are stateless (most of whom are not forcibly displaced); and other groups to whom UNHCR has extended its protection or provided assistance on a humanitarian basis. At the end of 2025, this figure stood at **129.4 million** people.

These two categorizations are compared in the graphic below. A detailed breakdown of the population that UNHCR protects and/or assists is provided in the [annex tables](#) by category and country.

The statistics in this report have been produced following UNHCR's Statistical Quality Assurance Framework for Official Statistics.<sup>12</sup> The figures are based on data reported by governments, non-governmental organizations, UNHCR and other United Nations (UN) agencies. Statistics were received or compiled for 190 countries, two more than at the end of 2024.

The supervisory role of UNHCR concerning the application of refugee law instruments involves, inter alia, obtaining from governments information and statistical data concerning the condition of refugees.<sup>13</sup> In addition, the mandate of UNHCR to identify, prevent and reduce statelessness and protect stateless people "encourages States which are in possession of statistics on stateless persons or individuals with undetermined nationality to share those statistics with UNHCR and calls on UNHCR to establish a more formal, systematic methodology for information gathering, updating and sharing".<sup>14</sup>

The numbers presented are rounded to the closest hundred or thousand. As some adjustments may appear later in the year in the Refugee Data Finder,<sup>15</sup> figures contained in this report should be considered provisional and subject to change. Unless otherwise specified, the report does not refer to events occurring after 31 December 2025.

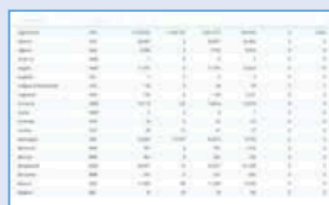
After the closure of its Regional Bureau for Southern Africa,<sup>16</sup> UNHCR has six regional bureaux (see chart below).<sup>17</sup> Countries within the Americas region (22.8 million) host the largest number of forcibly displaced people, followed by countries in Eastern and Southern Africa (22.7 million), the Middle East and North Africa (21.8 million), Europe (18.1 million), West and Central Africa (16.4 million) and the Asia and Pacific region (15.5 million).

### UNHCR's new Refugee Data Portal is coming soon!

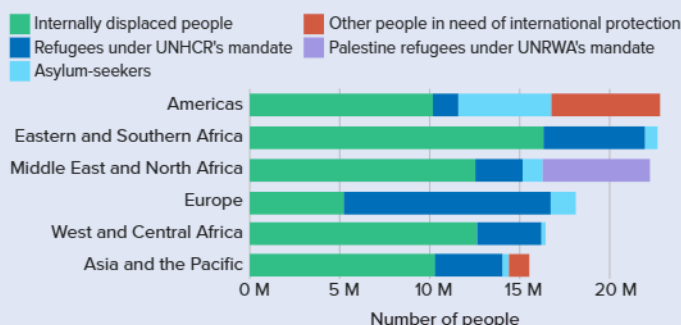
In the third quarter of 2026, UNHCR will launch a new **Refugee Data Portal**, which will integrate UNHCR population statistics with quality-assured socio-economic and protection indicators for the first time. For UNHCR and its partners, this will mark a transformation of official statistics on forcibly displaced and stateless people such that they not only describe the scale of displacement challenges, but also inform effective sustainable responses to them, enabling more effective coordination of humanitarian, development and government action through reliable interoperable open data. The portal is being developed with the support of the UNHCR-World Bank Joint Data Center. Read more about the [new Refugee Data Portal](#).



[View maps showing totals by population group and country.](#)



[View annex tables by category and country.](#)



<sup>10</sup> See [Methodology, Refugee Data Finder](#), UNHCR, for a definition of each population group.

<sup>11</sup> See [What is the difference between population statistics for forcibly displaced and the population that UNHCR protects and/or assists?](#), UNHCR.

<sup>12</sup> See [Statistical Quality Assurance Framework for Official Statistics](#), UNHCR.

<sup>13</sup> See [Convention Relating to the Status of Refugees](#), 1951, Article 35, paragraph 2, UNHCR.

<sup>14</sup> See [A Thematic Compilation of Executive Committee Conclusions](#), 7<sup>th</sup> edition, 2014, UNHCR.

<sup>15</sup> See [Refugee Data Finder](#), UNHCR.

<sup>16</sup> See [UNHCR announces closure of its Southern Africa Bureau as part of realignment review](#), September 2025, UNHCR.

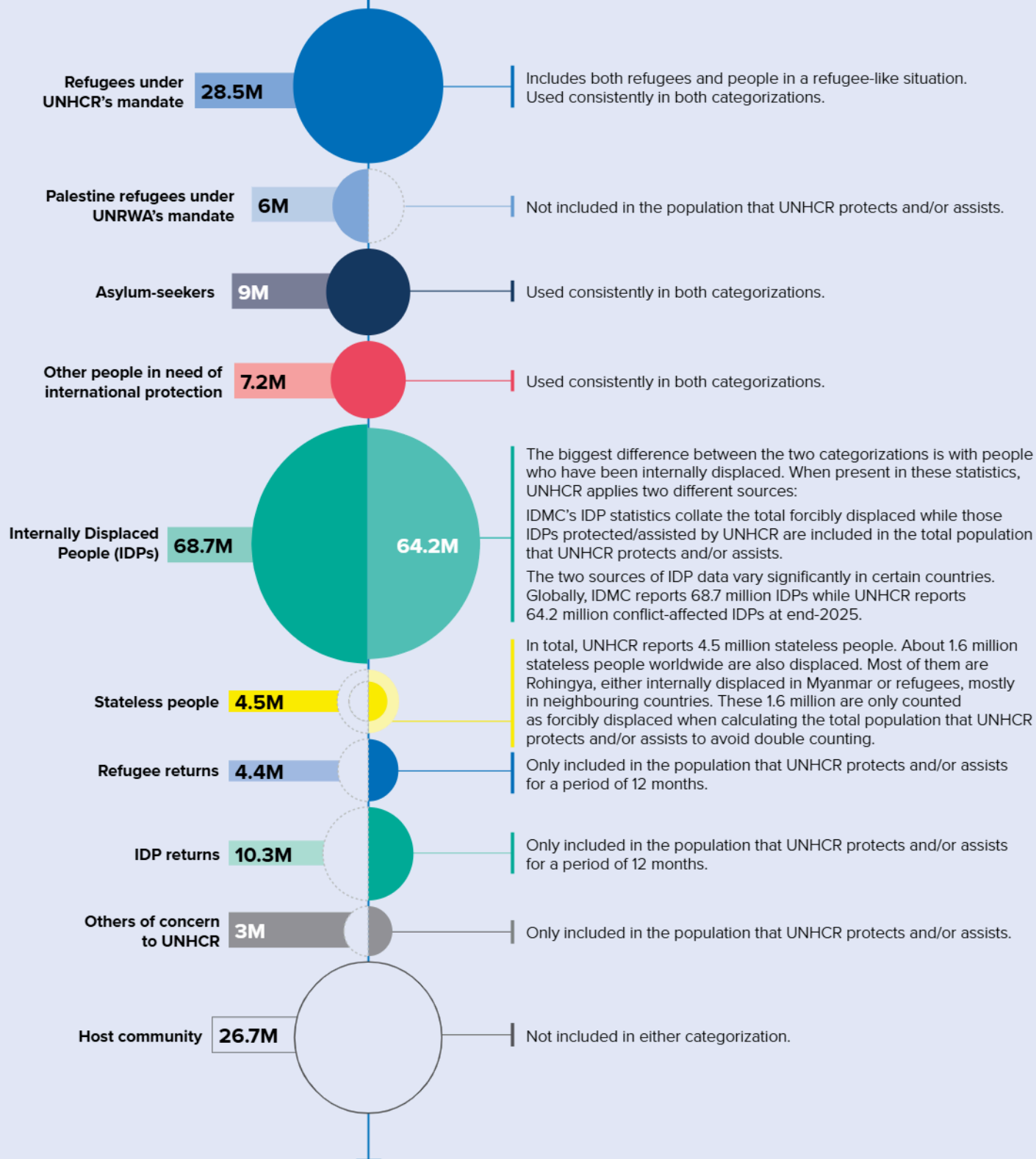
<sup>17</sup> See the updated regions in [Annex 18: Countries and regions](#), UNHCR.

## Forcibly displaced people 117.8 million<sup>18</sup>

This figure encompasses refugees under UNHCR's mandate, Palestine refugees under UNRWA's mandate, asylum-seekers, IDPs and other people in need of international protection.

## Population UNHCR protects and/or assists 129.4 million

This includes those who have been forcibly displaced (refugees, asylum-seekers, IDPs and other people in need of international protection); those who have returned home within the previous year; those who are stateless; and other groups to whom UNHCR has extended its protection or provided assistance on a humanitarian basis.



<sup>18</sup> See [What is the difference between population statistics for forcibly displaced and the population that UNHCR protects and/or assists?](#), UNHCR. UNRWA estimates that 70 per cent of the 2 million IDPs in the Gaza Strip at end-2025 were Palestine refugees under its mandate. These internally displaced refugees under UNRWA's mandate are only counted once in the global forcibly displaced total.